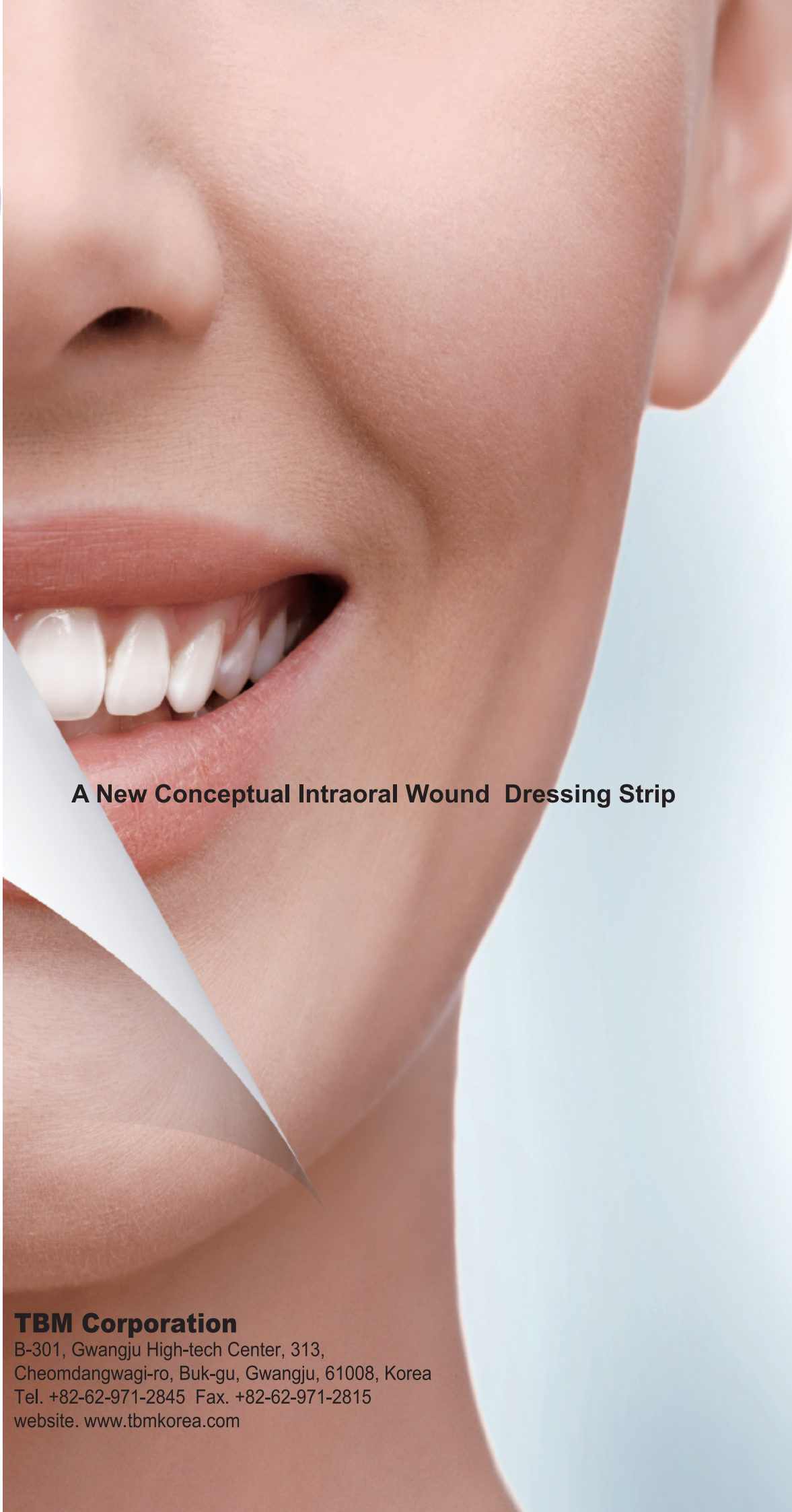


# Ora-Aid



A New Conceptual Intraoral Wound Dressing Strip

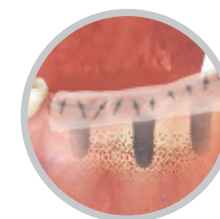
# Ora-Aid



Medical Device

Disposable

## Attachable Intraoral Wound Dressing



Implant Surgery



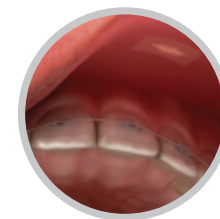
Tooth Extraction



Periodontal surgery



Periodontal treatment



Braces



Canker sore



Oral Wounds



Irritant

### TBM Corporation

B-301, Gwangju High-tech Center, 313,  
Cheomdangwagi-ro, Buk-gu, Gwangju, 61008, Korea  
Tel. +82-62-971-2845 Fax. +82-62-971-2815  
website. [www.tbmkorea.com](http://www.tbmkorea.com)

# Ora-Aid



## Ora-Aid

Safe, Easy, & Effective A New Paradigm  
for Intraoral Healing

Features & Benefits	2
Intend to use	3
Instructions & Storage	4
Cautions	5
Clinical Case	6
principal of interaction	12
Clinical Data	13
Certificate	14
Q&A	15
product composition	16



# Ora-Aid

## Features & Benefits

This device is used for protecting intraoral wounds with adhesive dressing materials.

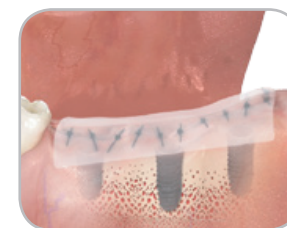
- Advanced concept in intraoral dressing
- Protect intraoral wounds from food, bacteria and cigarette smoke
- Aid in hemostasis
- Protect suture thread from tongue irritation
- Strong adhesion using hydrophilic polymer
- Easy to cut into different shapes/sizes
- Self adhesive with saliva
- Reduce irritation sore in mouth
- Safe and easy to use
- Mint flavor reduces halitosis
- Contain vitamin E



## Intend to use

Applicable to any cases in the oral cavity to protect intraoral wounds

- Promotes healing after oral surgery and treatment
- Open wounds and open suture
- Canker sore
- Protect suture thread from tongue irritation
- Protect sore from orthodontia
- Protect fluoride varnish or sensitive teeth
- Refreshing taste after surgical procedure
- Aid in hemostasis



Implantation



Surgery



Periodontal



Extraction



Braces



Stomatitis



Oral Wound



Infection

Ora-Aid Application Video  
(Usage, directions, and cases)



"Ora-Aid Video"

## Instructions & Storage

### • Instructions



- ① Irrigate wound with sterile or saline solution
- ② Cut Ora-Aid into a proper shape and size
- ③ Slightly remove moisture with gauze on the wound. An excessive exudation may reduce its adhesive strength and its use time
- ④ Remove transparent release paper and apply on wound
- ⑤ Gently press Ora-Aid for 5 to 10 seconds while Ora-Aid adheres to wound (According to circumstances, please press repeatedly)

### Incorrect usage case

▼ A moving mucosa and tongue



▼ Too much saliva and blood



▼ Space created due to incorrect attachment



▼ Chronic ulcer which has not get better over 1 month, and severe inflammation



▼ A dry wound



### Recommendations for use of product

- Compared to the movable mucosa, the attachment time is extended from the attached gingiva, upper jaw, and plate



### • Storage

1. Store the product at room temperature(1℃~35℃), away direct sunlight, heating source.
2. Non Follow storage condition may occur low performance product(adhesion, absorbability)
3. Use by : 3years

### ⚠ Cautions

#### Cautions of Pre-use

1. Please carefully read the instructions before use.
2. Do not use if the product appears damaged or contaminated before use. (Some bubbles in the product are from the manufacturing process and safe.)
3. This medical device is for single use. If reused, the product may cause infection, cross infection, and inflammation.

#### Cautions during use

1. If you experience any swelling, allergic reaction, upset stomach or any signs of infection, consult with your doctor.
2. Do not use on deep wounds with excessive bleeding.
3. Please do not remove Ora-Aid by force. The attachment side automatically falls off when it dissolved completely.
4. Remove the dropped protection side from a wound.
5. Please pay particular attention to remove the protection side before going to sleep, or in case of young children (under 5 age)

**\* Although Ora-Aid 's adhesion lasts more 6~12 hours hours, the actual use time depends on oral environment.**



## Clinical Case

### Subepithelial connective graft



### Subepithelial connective graft



## Clinical Case

### Crown lengthening procedure :CLP1



Before



After apply an Orascar

### Crown lengthening procedure :CLP1



After apply an Orascar

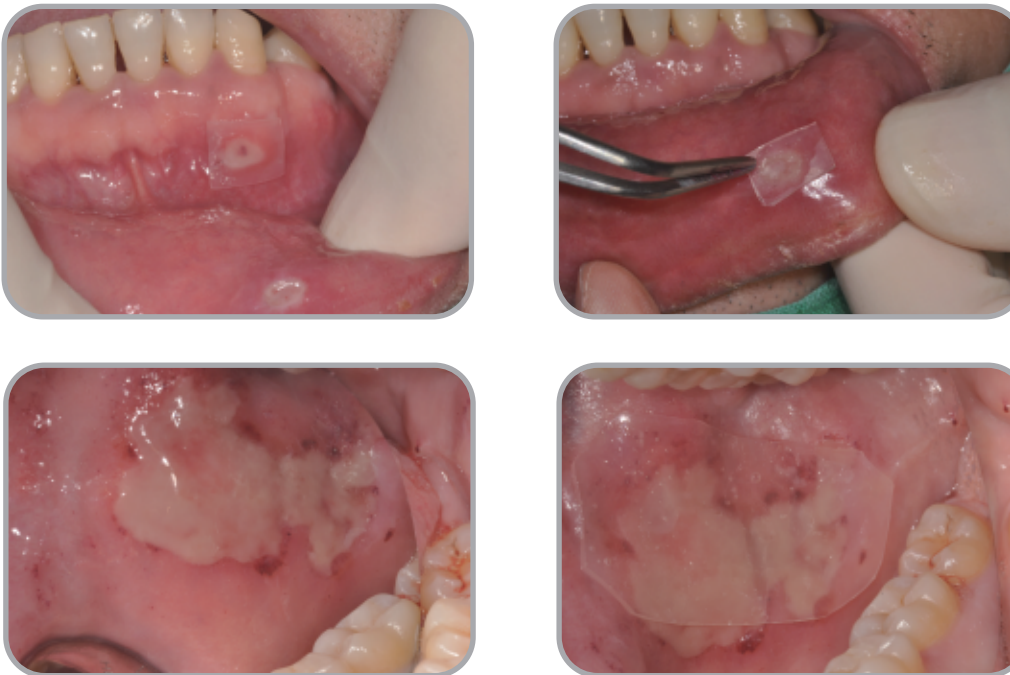


## Clinical Case

### Labial frenectomy, Periodontal Flap Operation

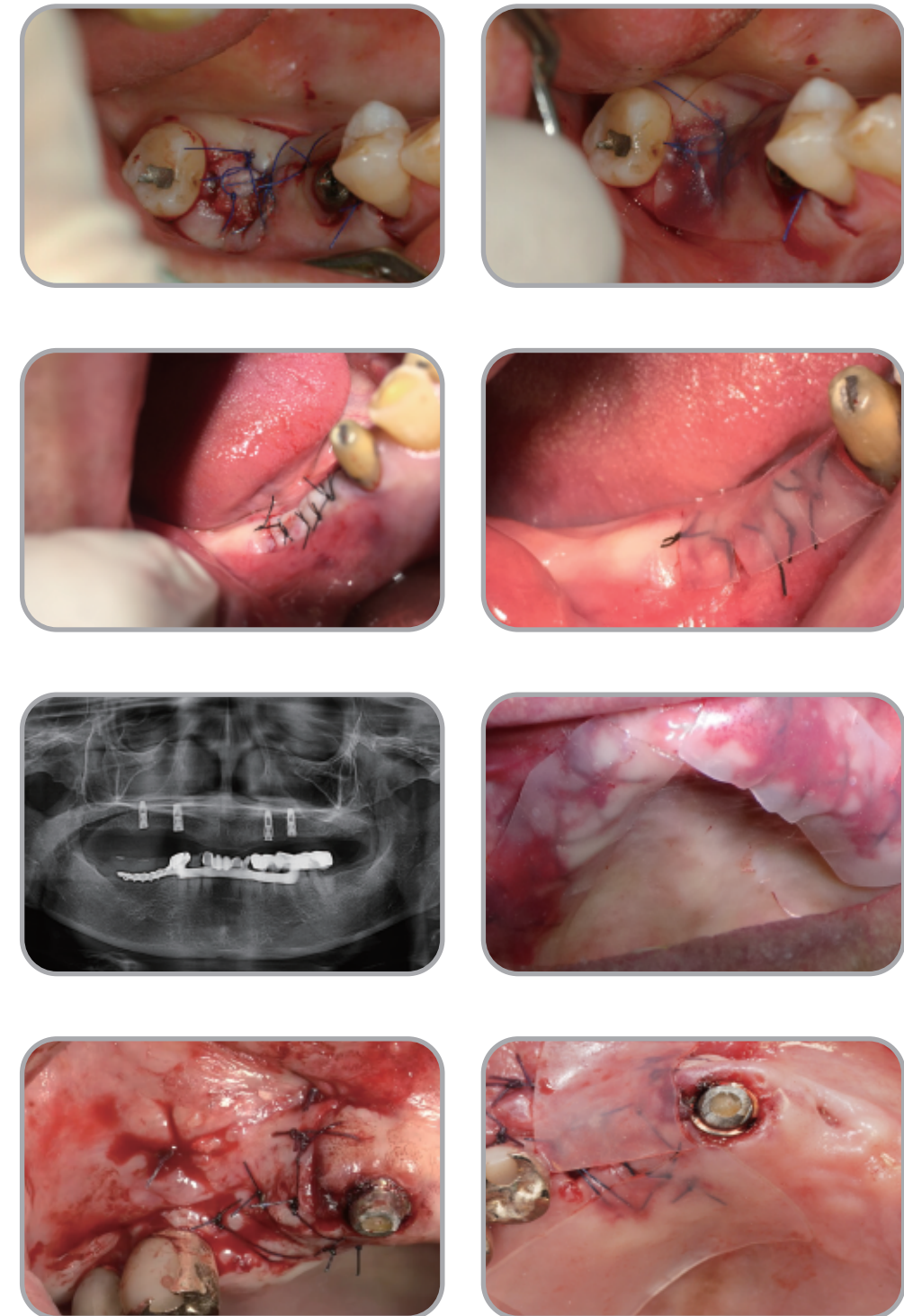


### Traumatic Ulcer



## Clinical Case

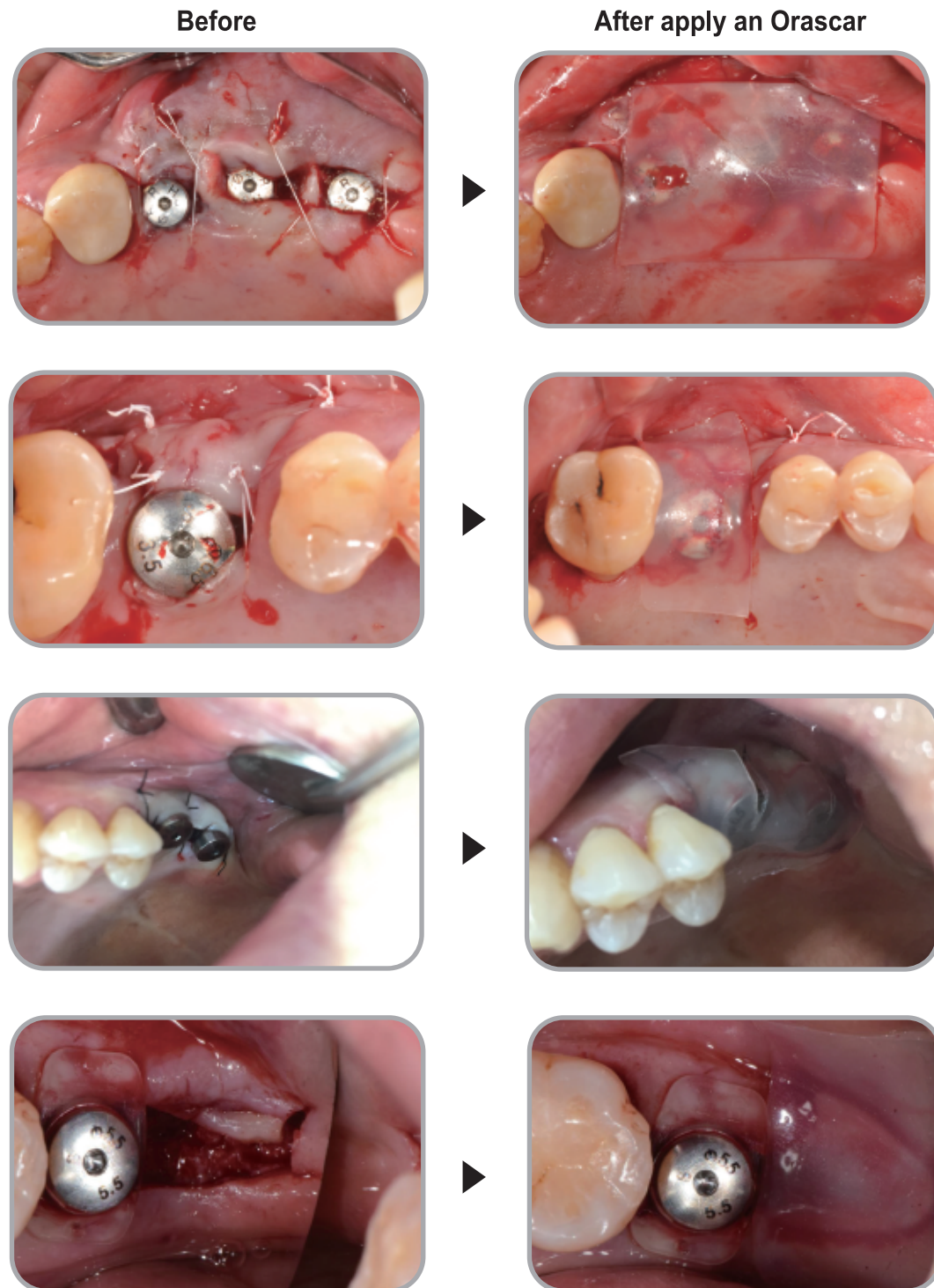
### Extraction and Implantation





## Clinical Case

### Implantation

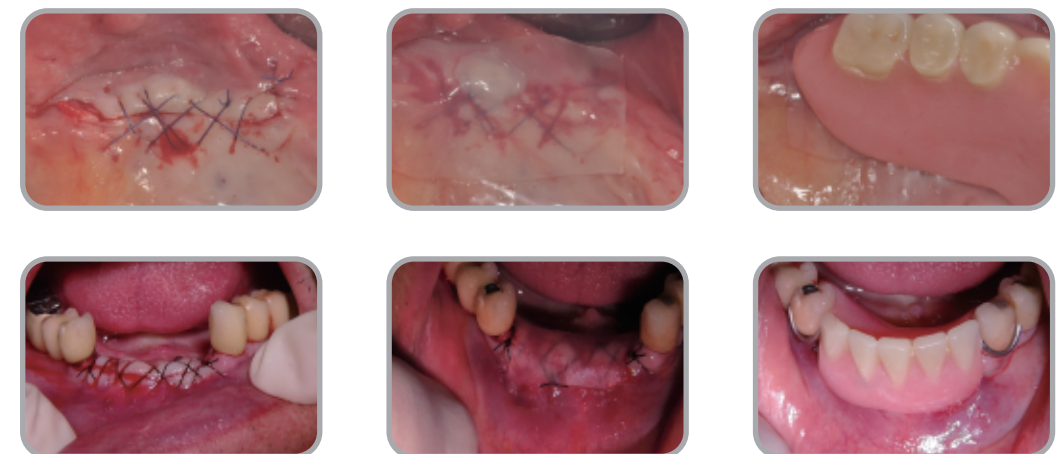


## Clinical Case

### Implantation two step

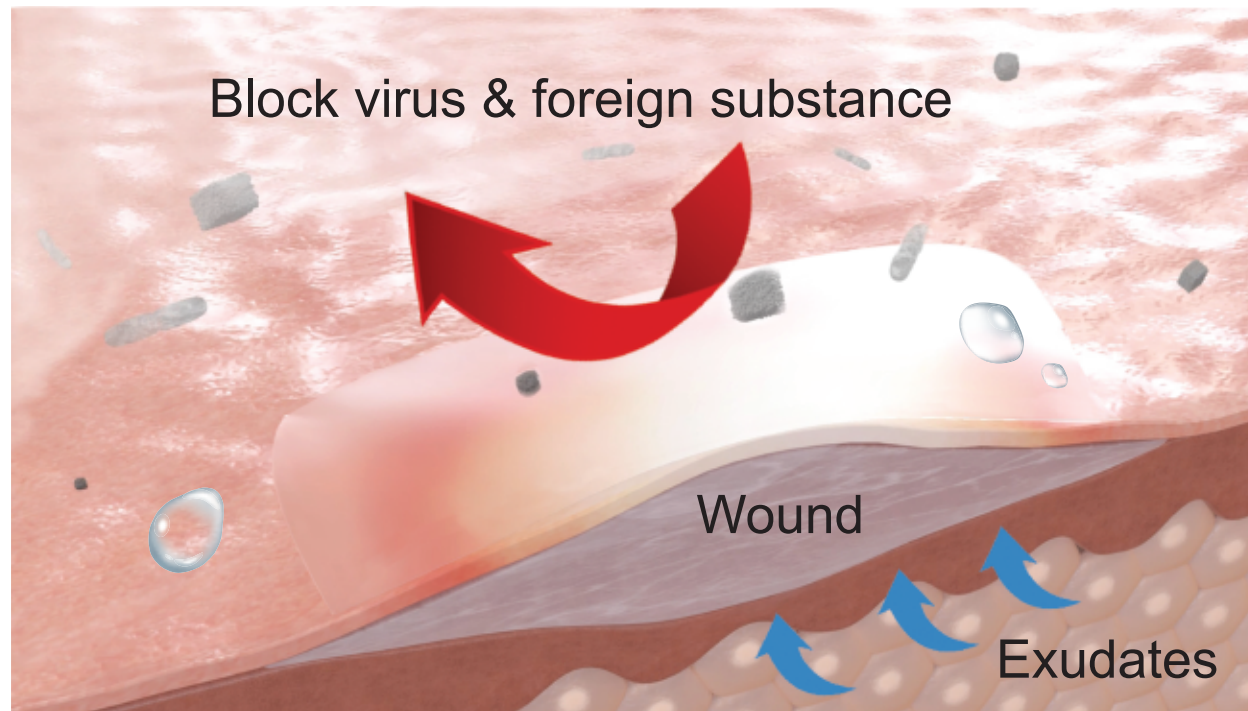


### Temporary denture





## principal of interaction



- 01** Absorption of excessive exudate  
 Too much secretion makes Wounded area macerated
- 02** Remains Healing Growth Factors on the surface of the wound  
 White Blood Cell Macrophage Proteolytic Enzyme Cell Growth Factors
- 03** Protect Wound from temperature variation  
 Insulation improves blood supply and circulation, and makes cell move actively
- 04** Protect Wound from infection, external stimulus  
 Foods, smoke, infection factors

## Clinical Data

Fig 1. Periodontal Pak(Left) and Ora-Aid(Right) were applied after modified Widman flap

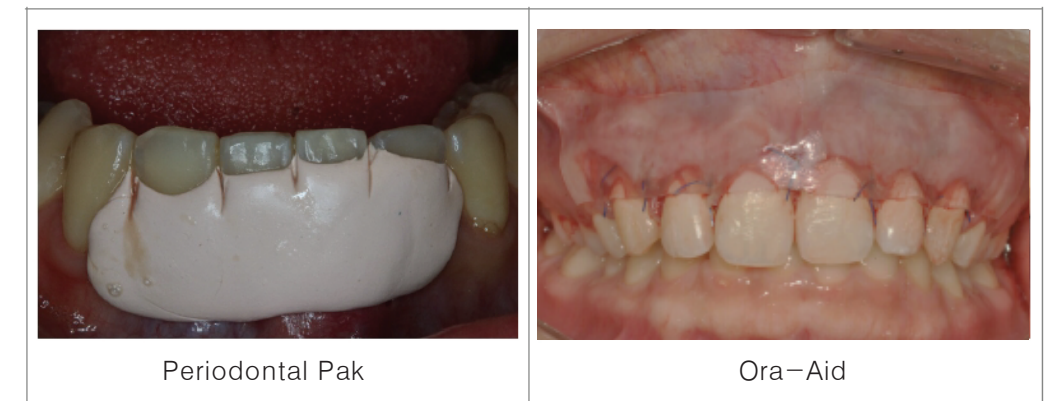
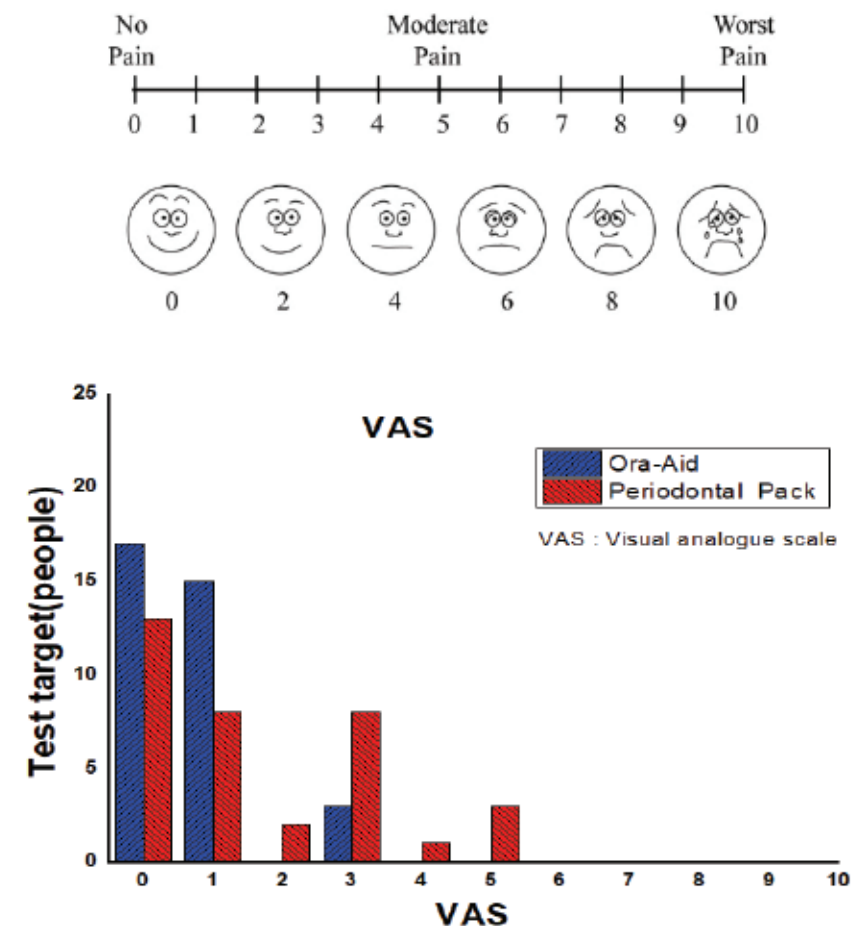


Fig 2. Visual analogue scale for the assessment of postoperative pain





## Testing Report

## Q & A



▲ Acute systemic Toxicity Test    ▲ Microbial Limit Test    ▲ Cytotoxicity Test    ▲ Subchronic systemic toxicity

### Q. Need to remove protection layer?

No. Ora-Aid is composed of 2 layers, protection layer and attachment layer. When the attachment layer dissolved completely with moisture/saliva in mouth, the protection layer will fall off automatically. So, do not need to remove protection layer by constraint.

### Q. It does not stick well and fall too fast.

Often they are not correctly attached. Due to the characteristics of the product, it does not attach itself directly to the affected area like a regular and, but rather needs time to react with moisture to product adhesion. You should stick the adhesive part to the affected area for about 10 seconds and press it firmly. Normally, it can generally be attached for more than 6 hours, but it may fall a little faster in areas with too much of saliva/moisture. In most cases, it is attached by connecting between hard and soft tissue, so that it falls quickly due to the movement of soft tissue muscles.

### Q. How long the adhesion remains normally?

Normally, Ora-Aid stays around 6 hours in the oral cavity. However, it depends on the case, because the amount of moisture/saliva is different.

### Q. Ingredients?

It is made of polymeric materials, including hydroxy ethyl cellulose. All raw materials are listed on KP & USP standards.

### Q. Shouldn't be stay more than 2-3 days?

The main purpose of Ora-Aid is to increase natural healing effects of oral tissue with preserving growth factors through the absorption of exudate especially at the beginning. In Addition, it provides protection to the wound area(early stage) against secondary infection or injury.

### Q. Can use without suture or can suture it inside tissue?

We do not recommend it. Better to use Ora-Aid after on suture. And you cannot use Ora-Aid like membrane inside oral tissue. It should be used outside of oral tissue to protect oral wound.

## Quality Certificate



▲ GMP



▲ ISO 13485

# Ora-Aid

## product composition



25x15mm X 1ea



50x15mm X 1ea



amount	20ea
color	red
size	25x15mm
Code.No	AG-202A



amount	20개입
color	Mint
size	50x15mm
Code.No	AG-205A



### TBM Corporation

B-301, Gwangju High-tech Center, 313,  
Cheomdangwagi-ro, Buk-gu, Gwangju, 61008, Korea  
Tel : +82-62-971-2845 Fax : +82-62-971-2815  
website : www.tbmkorea.com