

MAZIC Duro

Nano Hybrid Ceramic for CAD/CAM



***Elasticity & Easy Workability · High Flexural Strength ·
Stain Resistance · Excellent Esthetics***





Excellent esthetics and durability !

- Natural tooth-like esthetics and elasticity
- High flexural and compressive strength
- Excellent stain resistance
- Easy add-on with composite resin
- Excellent cementation
- Easy handling for adjustment of occlusal surface
- No firing and glazing : saving time, equipment and spaces
- Prosthesis treatment in 1-Day



Crown Onlay Inlay Veneer

MAZIC Duro

MAZIC Duro is an advanced Nano-Hybrid ceramic, consisting of ca.80% of Nano-particle sized ceramic fillers (zirconia, silicate) and 20% of high-density, hardening resin matrix. **MAZIC Duro** has advantages of both high-density resin matrix and ceramics at the same time. You can take elasticity, easy workability of high-density resin matrix and also strength, stain resistance as well as aesthetics of ceramics.

MAZIC Duro applies to various prosthesis such as inlays, onlays, veneers and single crown with 1-Day treatment and makes sure of higher standard of esthetics than other materials, in spite of easy and simple workings only with CAD/CAM system.

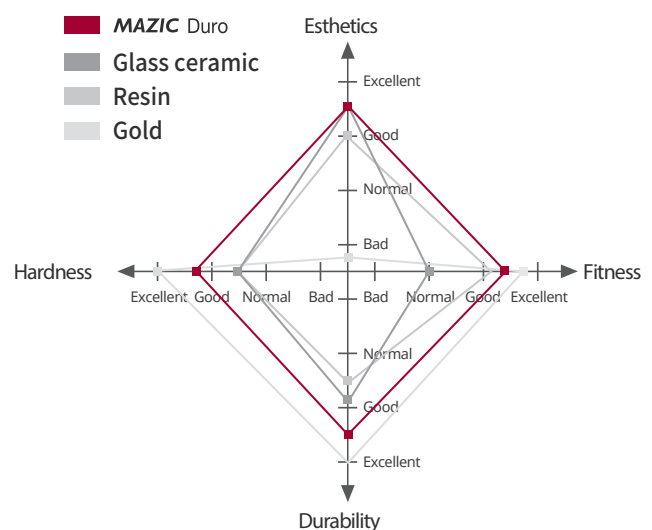
Patent On Control Technique Of All Direction Shrinkage-stress

MAZIC Duro Company M



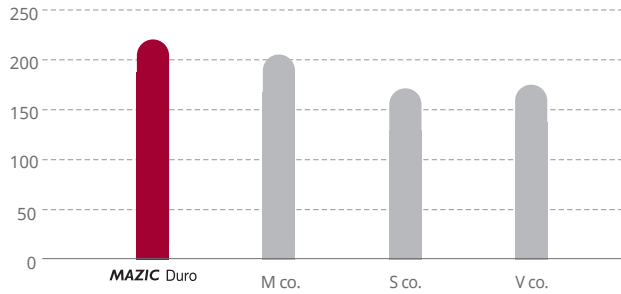
The patent technology for assuring high workability and esthetics by equally dispersing the stress of particular directions.

Physical Properties Comparison In Inlay Application



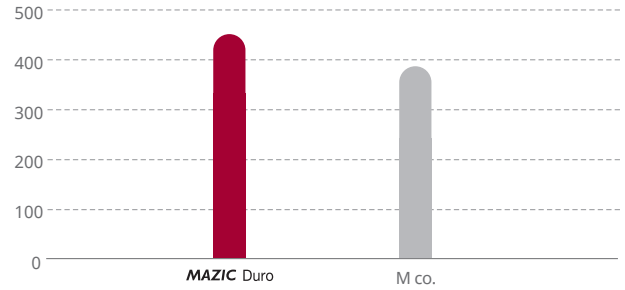
MAZIC Duro has the closest physical properties and esthetics comparing with natural teeth and flexural/bonding/compressive strength are much better than glass ceramic as well as indirect resin. Realize the best esthetic prosthesis that every patient wishes with **MAZIC Duro**.

Flexural Strength [MPa]



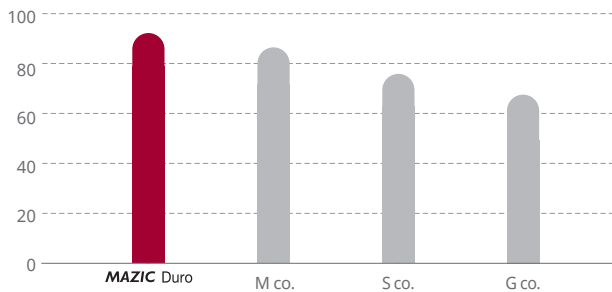
High flexural strength makes possible to use the material for a long time in oral.

Compressive Strength [MPa]



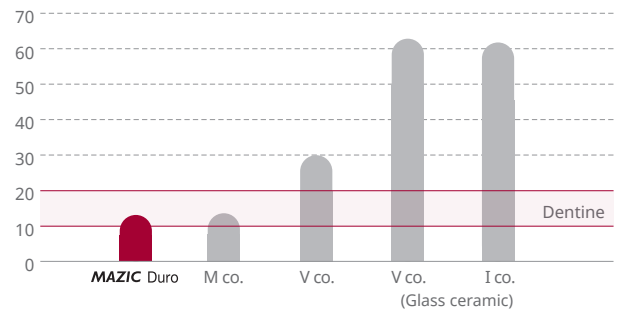
High compressive strength makes resistant to the stress of chewing.

Vickers Hardness [HV]



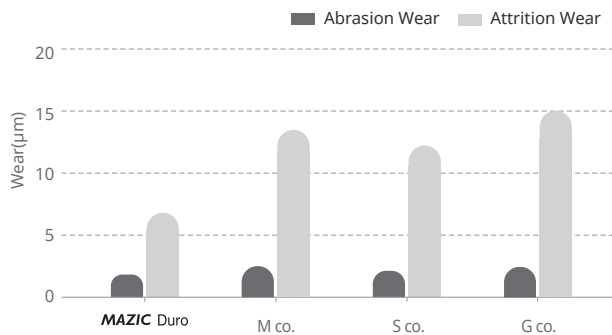
High vickers hardness makes resistant to micro-wear.

Modulus of Elasticity [GPa]



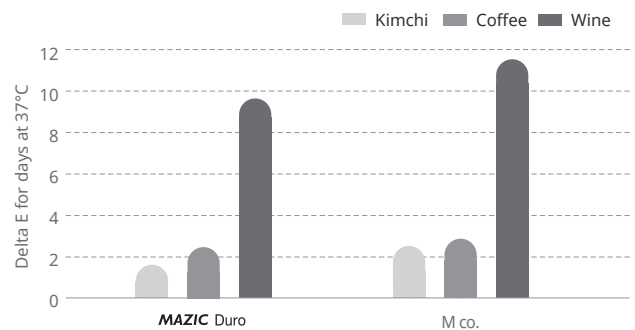
Modulus of elasticity similar to natural teeth minimizes the damages of antagonistic teeth as well as prosthesis.

Wear Resistance



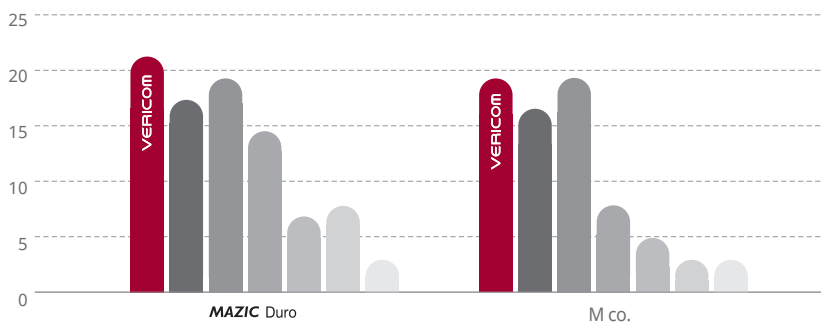
High wear resistance makes long-term use due to the high resistance to chewing and surface wear by food or toothpaste.

Stain Resistance



Low stain resistance maintains esthetics for a long time due to no shade variance of prosthesis.

Bonding Strength [MPa]



MAZIC® Cem

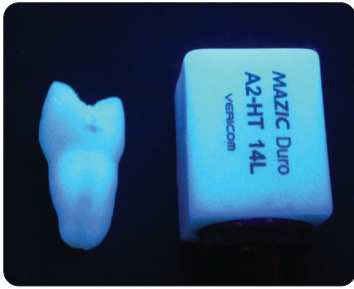
- M co. (A)
- M co. (B)
- Ku co.
- Ke co.
- B co.
- F co.

Self-Adhesive Resin Cement

: VERICOM, M, Ku, Ke, B co.

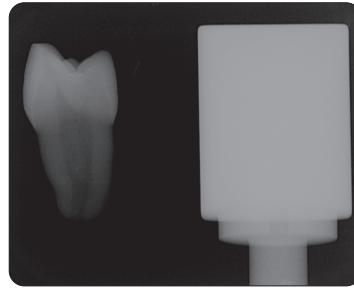
Glass Ionomer Cement

: F co.



Fluorescence

MAZIC Duro shows natural esthetics even in mouth due to the fluorescence similar to your teeth.



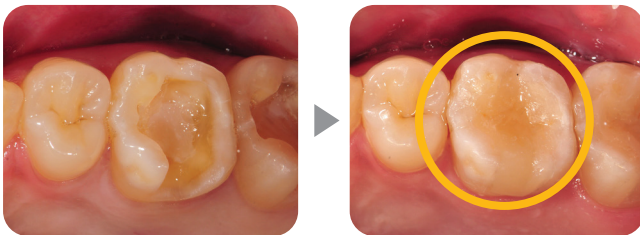
Radio-opacity

MAZIC Duro is easy to check dental procedures with high radio-opacity.

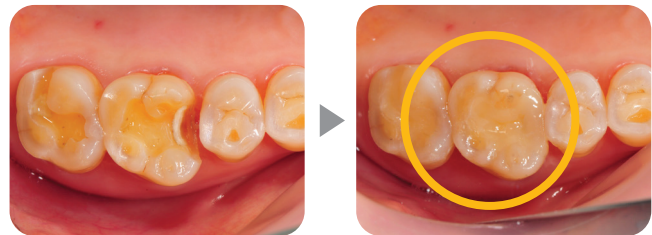
Clinical Cases

MAZIC Duro is available for fabricate single teeth such as Inlays, Onlays, Veneers and Full Crowns.

• **Case 1**



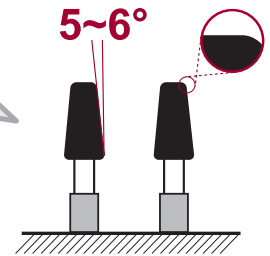
• **Case 2**



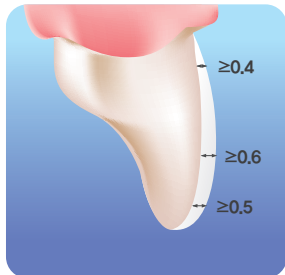
Preparation Guidelines

- MAZIC Duro follows a prep-guideline of all ceramics restoration.
- Inside of the edge and angle should be round.
- It is recommendable to prep rounded shoulder and chamfer.
- The numerical values in guide-lines are the minimum thickness of prosthesis by MAZIC Duro.

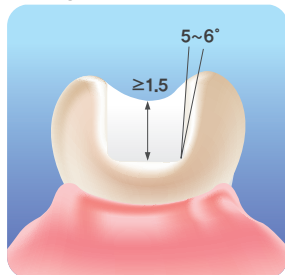
Prep tooth with 5~6° taper, rounded edge and shoulder margin.



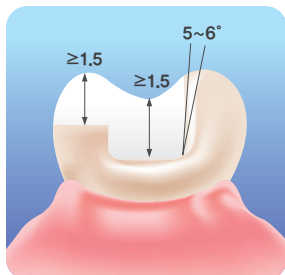
Veneer



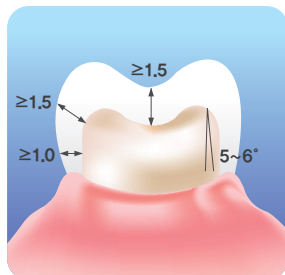
Inlay



Onlay



Crown



Check Point!

Good

- In case of crown, prep tooth with 5~6° taper, rounded edges and shoulder margin.
- Remove residues(temporary cement, tooth-debris and scanning spray) by a brush or soft pumice.
- Gently clean with water and blow dry by air. (Do not dry completely)

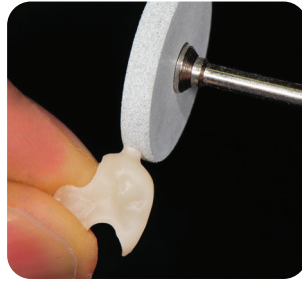
Bad

- Do not use chemicals after prep. (Example : EDTA, CHX, Bicarbonate, Hydrogen peroxide, Hyper-esthetic agent)
- Do not use laser etching.
- Do not use temporary cement in types of eugenol affiliation.

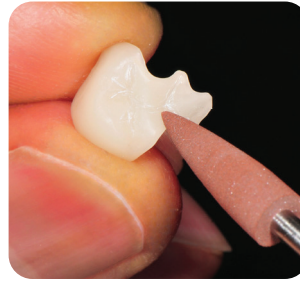
Polishing Procedure



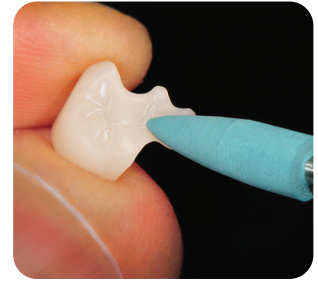
1. Removing sprue by diamond disc.



2. Grinding with cerapol wheel.



3. Polishing with rubber point.



4. Polishing with silicon point.



5. Polishing with a soft brush applied by diamond paste.



6. Finish with cotton wheel.



< Comparison of gloss before and after >

Glazing Procedure

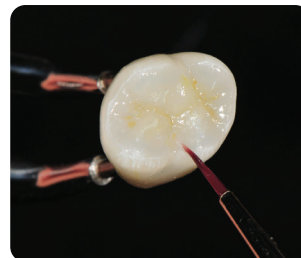


1. Sand blasting with 25-50 μ m alumina. Clean using ethanol, steam and ultra sonic cleaner. Dry sufficiently.

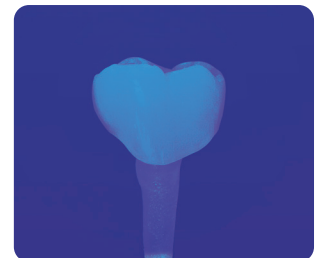
Use MAZIC Primer if necessary.



2. Mix well before use MAZIC Glaze.



3. Painting and coloring MAZIC Glaze stain liquid to restoratives with brush tips.



4. Light cure.

• Occlusal application sample



• Shade guide and Color expression

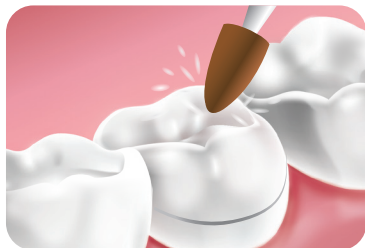


◀ MAZIC Duro + MAZIC Glaze

- A1: MAZIC Duro A1 + A-line
- A2: MAZIC Duro A1 + [A-line + Yellow + Orange]
- A3: MAZIC Duro A1 + [A-line + Orange (7:3)]
- A3.5: MAZIC Duro A1 + [A-line + Orange (5:5)]

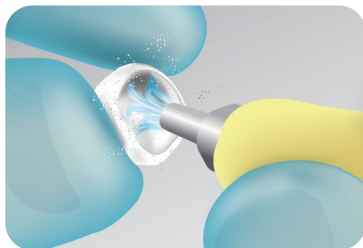
◀ Classical Shade guide

Cementation Guidelines



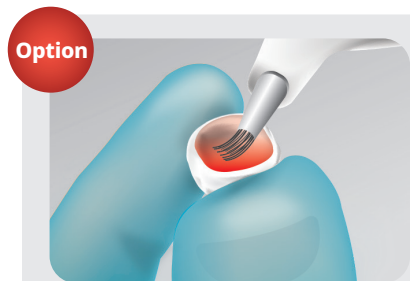
1. Intraoral Try-in

Check out proximate and occlusal surface between prosthesis and teeth. Trim the surface.



2. Sand Blasting

Sandblast with 25-30µm alumina (0.2MPa). Clean with oil free air syringe and with ethanol.



Etching

Etch inside of prosthesis with 5% of Hydro fluor acid for 20 sec. and clean by neutralizing agent.



3. Silanate

Before cementation, apply silane primer and dry for 60 sec.



4. Cementation

Apply high performance self-adhesive or adhesive resin cements.



5. Final Restoration

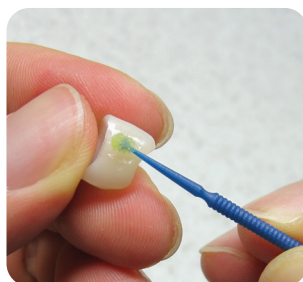
Hold restorations in place until cement sets. And remove excess cement.

Add-on Guide

Easy repair with our light-cured composite resin is possible.



1. Prepare Add-on part rough.



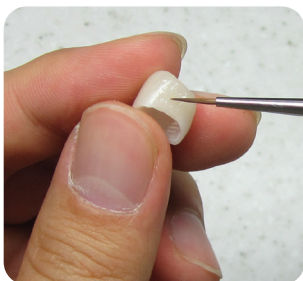
2. Apply for BC Plus twice to Add-on part.



3. Dry enough with soft air (Approx. 10 sec.).



4. Light-curing for Approx. 20 sec.



5. Apply for DenFil Flow to Add-on part.



6. Light-curing for Approx. 20 sec.



7. Finalization by polishing the part of Add-on and surroundings.

Bonding Agent
BC plus



Flowable Light-cured Composite Resin
DenFil Flow

Order Information

Mandrel Type (Cerec Type)



Product		10	12	14L
Size (W×L×H, mm)		10×8.5×15	12.2×10.2×15	14.5×14.5×18
Shade	HT	A1, A2, A3	A1, A2, A3, B1	
	LT	-	A1, A2, A3, A3.5, A4 (B1, C2, D2, W1)	

Disk Type



Size		8T	10T	12T	14T
Size		ø98, ø100	ø98	ø98	ø98
Shade	HT	A1, A2, A3	A1, A2, A3	A2, A3	A2, A3
	LT	A3.5	A3.5	-	-

Product Line-up

Light-cured Characterization Solution

MAZIC Glaze



MAZIC Glaze is a coloring liquid that can be used for staining and polishing dentures or other dental prostheses, which provides beautiful and aesthetic prostheses to the patients by expressing the same color as the natural teeth.

Self-Adhesive Universal Resin Cement

U-Cem Premium



U-Cem Premium is a dual-cured self adhesive resin cement that requires no pre-treatment. This material shows high bonding strength on various prosthesis and no micro-leakage. Also, it is easy to use and to remove excess cement.

Long-term Temporary Restorative Resin Blank

MAZIC Pro



The next-generation in hybrid temporary restorative material consists of 10nm fine-particles and pearl type polymer. And it has a different aesthetic and workability compared to conventional PMMA for temporary prosthesis manufacturing.

Surface Pretreatment Primer

MAZIC Primer



MAZIC Primer improves bonding strength between resin cement and indirect restoration such as zirconia, metal glass ceramic, lithium disilicate glass ceramic and composite resin.

Pre-sintered Zirconium Oxide Blanks (Y-TZP)

MAZIC Zir



The zirconia stabilized by yttrium oxide protects the material against cracks and increases the tensile and compressive strength. MAZIC Zir consists of 3 types of translucency according to purpose of use and it provides various shades and shapes.

Light-curing device for resin in various purposes

Cure Box Dual



Cure Box Dual, as a multi-purposed light curing device, lets most of light-cured resins in dental filed be cured by using Dual Wavelength. In comparison to other devices with UV Lamp, semipermanent lamp life allows effective curing due to 4 times stronger brightness.

MAZIC Duro

Nano Hybrid Ceramic for CAD/CAM

